

ULTRX™

BIONIC FUSE **BLUETOOTH®** ELECTRONIC EARBUDS

MODEL NUMBER: 4111

The ULTRX™ Bionic Fuse Bluetooth® Electronic Earbuds are designed to offer the user the convenience of 5 sound mode options depending on the environment you are operating in:

MODE 1: SOUND AMPLIFICATION/PROTECTION MODE (FOR NATURAL, LOW DECIBEL ENVIRONMENTS)

Provides active external sound amplification through 2 hi-gain omni-directional microphones. These microphones are designed to boost external sound sensitivity up to 5x normal hearing while providing crisp, high-definition sound wave spectrum isolation to deliver hearing clarity. This mode is designed to modulate and isolate softer, quiet sounds found in natural environments. Any loud noises above 82dB will trigger both an immediate split-second dynamic sound wave compression AND immediate microphone shut down function protecting the user's ears from the harmful incoming high decibel sounds.

MODE 2: SOUND AMPLIFICATION/PROTECTION MODE (FOR LOUD, HIGH DECIBEL ENVIRONMENTS)

Provides similar sound amplification technology as Mode 1. Instead of modulating softer sounds, Mode 2 is designed to modulate and isolate loud harmful sounds found in harsh, active environments such as shooting ranges and construction sites. Any loud noises above 82dB will trigger the same immediate sound wave compression AND microphone shut down as Mode 1, protecting from harmful incoming high decibel sounds.

MODE 3: BLUETOOTH® MODE

Allows the user to pair via Bluetooth® 5.3 technology to a smart device. This setting provides the ability to listen to various audio content sources via studio acoustic quality high-definition speakers, in a noise-dampening state for the most enjoyable listening sound experience.

MODE 4: BLUETOOTH® MODE + MODE 1

Combines low decibel external sound function with the Bluetooth® content functionality. This can aid in situational awareness while enjoying both modes simultaneously.

MODE 5: BLUETOOTH® MODE + MODE 2

Combines high decibel external sound function with the Bluetooth® content functionality. This can aid in situational awareness while enjoying both modes simultaneously.

HOW TO OPERATE

Turn on earbuds by pressing the Power Button on the charging case. When the unit powers up, you will see the charging lights and ear bud lights illuminate. Place earbuds in ears and adjust using **Instructions for Proper Fit**.

At this point, you will notice the presence of external sounds via the external microphones. The earbuds will automatically start with **Mode 1: Sound Amplification/Protection Mode**.

If you wish to operate in **Bluetooth® Mode [Mode 3]**, pair earbuds to your smart device using the **Bluetooth® Pairing Instructions** below. Once your device is paired, you will be able to listen to digital content, phone conversations, etc. Control volume using controls on your smart device.

To switch between sound modes, press the textured Mode Button located on the top of the earbuds. The modes cycle through in numerical order.

Note: The mode buttons on either earbud may be used for controls.

When switching between **Sound Amplification/Protection Modes [Mode 1 and Mode 2]**, you will notice a volume change in the sound coming through the external microphones.

When switching from **Bluetooth® Mode [Mode 3]** to **Mode 4** and **Mode 5**, you will notice a volume reduction of the Bluetooth® audio content you were hearing.

Depending on the environments you operate in, different sound modes can be used to maximize your external listening ability, internal sound protection, and Bluetooth® content enjoyment - all at the same time.

If earbuds are left out of charging case when not in use, after a period of time they will go into hibernation mode. To reactivate them, either place them back in the charging case or press the textured Mode Button located on top of the earbud.

To turn the unit completely off, hold the Power Button down for at least 3 seconds, until you hear an audible command of "Power Off". You will also notice 3 red flashes of the power light as the unit is powering down.

BLUETOOTH® PAIRING INSTRUCTIONS

Ensure earbuds are in close proximity to your smart device. Turn on your smart device and navigate to the Bluetooth® devices screen (Figure 2).

Power up the earbuds and remove them from charging case. The ear buds will immediately enter pairing mode. You will see the earbud lights flash alternating red and blue as they try to find a device to pair with. You will also hear an audible chime through the earbuds alerting you that the earbuds have entered pairing mode. The earbuds will appear under the name "ULTRX-Bud" in the unconnected Bluetooth® devices list on your smart device (Figure 2). Choose the device labeled "ULTRX-Bud". An audible "Connected" message will confirm your earbuds are now paired to your device, and "ULTRX-Bud" will move up to your saved devices.

The next time you power up, they will automatically pair by removing them from the charging case.

INCOMING CALLS

In **Bluetooth® Mode**, incoming phone calls will mute audio content and you will hear your phone's ringtone until the call has ended. To answer an incoming call, press the textured Mode Button once. Some smart devices will allow you to receive the call by EITHER pressing the Mode Button OR tapping your device screen. As devices vary, you will need to test to see which method works for you. To disconnect from a call, press the Mode Button once more. To reject a call and return to Bluetooth® audio, press and hold the Mode Button continuously for at least 3 seconds.

CHARGING INSTRUCTIONS

Use the provided USB-C cable to charge. The USB-C Charging Port for this product is located on the backside of the charging case. It is covered by a weatherproof rubber plug to help protect the internal electronics from dust and water invasion. To charge, remove the plug and insert the charging cable into the USB-C Charging Port. When completely charged, all 4 charging lights will emit a constant white glow. Charging times will vary depending on AC/DC power sources and ambient air temperature. Charging times for this unit using an AC power source can vary from 2-3 hours on average. After you are satisfied with charging, replace the rubber plug into the USB-C Charging Port.

INSTRUCTIONS FOR PROPER FIT

This product comes with a number of additional components to help secure the best fit. There are 3 Outer Ear Sleeve sizes that can be interchanged to best fit your outer ear. There are also 4 Foam Tip sizes and shapes that can be interchanged to best fit your inner ear canal. Take a moment to test the various sizes to see which achieves the best fit for you. The proper fitting Foam Tip will provide both a comfortable fit inside your ear as well as an adequate barrier, sealing your inner ear from external noises.

Inserting Foam Tips (Figure 3):

1. With clean hands, slowly roll Foam Tip to make thinner at end.
2. While Foam Tip is compressed, insert into ear canal. Fitting is easier if outer ear is pulled outwards and upwards during insertion.
3. Hold earbuds in place until Foam Tip expands for snug fit.

ULTRX™ WARRANTY STATEMENT

Allen Company warrants this ULTRX™ product to be free of defects in materials and workmanship, under normal use and conditions for a period of one year from the date of original purchase. Under this warranty, this unit will be replaced or repaired at our option, without charge for parts or labor (excluding batteries) for this period.

This warranty is void if any of the following occur:

- The unit is not owned by the original purchaser at the time of warranty claim
- The unit has been tampered with, opened or punctured
- The unit has been immersed in water or other liquids, allowed to be filled with dirt or dust, or otherwise physically abused

This shall be the exclusive written warranty of the original purchaser and neither this warranty or any other warranty, expressed or implied, shall extend beyond the 12-month period listed above. In no event shall Allen Company be liable for consequential damages, consequential property damage, or consequential personal injury. This warranty gives you specific legal rights, and you may have other rights, which vary from state-to-state.

WARNING

CHOKING HAZARD. Contains small parts. Keep away from children.

FIGURE 1

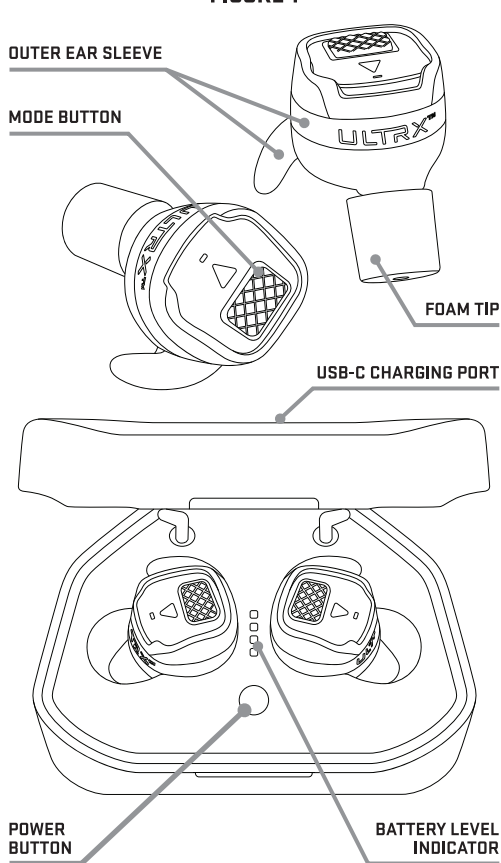
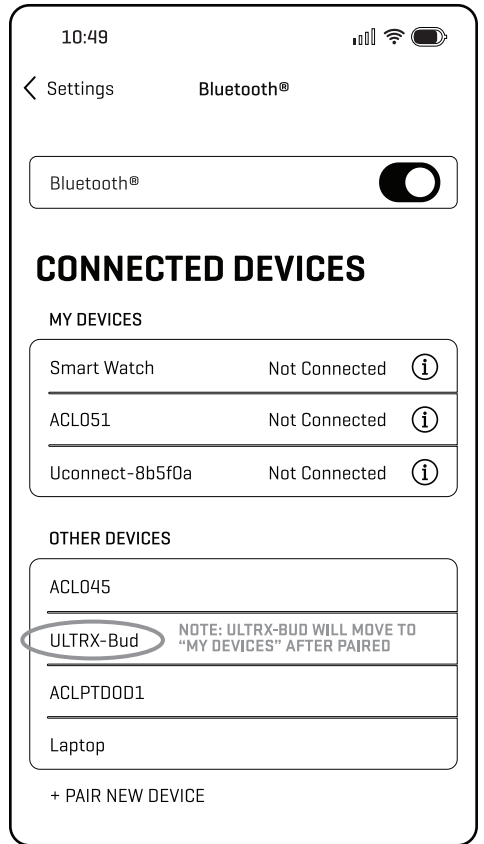


FIGURE 2



TETHER CORD INSTALLATION

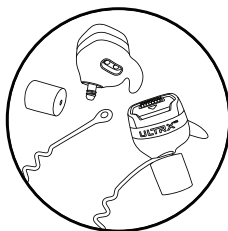
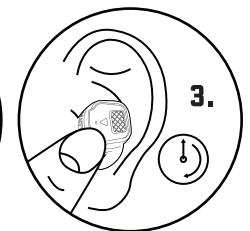
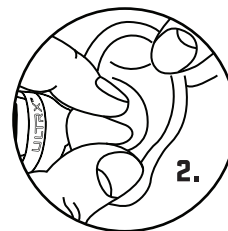
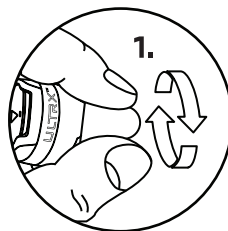


FIGURE 3: INSERTING FOAM TIPS



Noise Reduction 26 DECIBELS Rating (WHEN USED AS DIRECTED)

THE RANGE OF NOISE REDUCTION RATINGS FOR EXISTING HEARING PROTECTORS IS APPROXIMATELY 0 TO 30 (HIGHER NUMBERS DENOTE GREATER EFFECTIVENESS)

Allen Company, Inc. Louisville, CO MODEL NO. 4111

Federal law prohibits removal of this label prior to purchase EPA LABEL REQUIRED BY U.S. EPA REGULATION 40 CFR Part 211, Subpart B

ATTENUATION DATA (TESTED IN ACCORDANCE WITH ANSI S3.19-1974)

FREQUENCY	125	250	500	1000	2000	3150	4000	6300	8000
MEAN ATTENUATION	34.4	30.2	34.3	35.7	38.4	41.5	43.7	45.5	45.1
STANDARD DEVIATION	5.9	5.1	5.5	4.7	4.1	2.7	5.3	4.8	5.7

REGULATORY COMPLIANCE INFORMATION

The EPA has selected the Noise Reduction Rating (NRR) as the descriptor of hearing protector effectiveness to be utilized on the labels required by the U.S. EPA Regulation 40 CFR Part 211, Subpart B. The Allen Company, Inc. makes no warranties as to the suitability of the NRR as a measure of the actual protection to the individual user.

The level of noise entering a person's ear, when hearing protector is worn as directed, is closely approximated by the difference between the A-weighted environmental noise level and the NRR.

Example

- The environmental noise level as measured at the ear is 92 dBA.
- The NRR is 26 decibels (dB).
- The level of noise entering the ear is approximately equal to 66 dB(A).

CAUTION: For noise environments dominated by frequencies below 500 Hz the C-weighted environmental noise level should be used.

Improper fit of this device will reduce its effectiveness in attenuating noise. Consult **Instructions for Proper Fit**.

Although hearing protectors can be recommended for protection against the harmful effects of impulsive noise, the Noise Reduction Rating (NRR) is based on the attenuation of continuous noise and may not be an accurate indicator of the protection attainable against impulsive noise such as gunfire.

Constant or repetitive exposure to impulsive noise may lead to serious injury, temporary or permanent deafness.

This device complies with part 15 of the FCC Rules. Operation is subject to the following two conditions: (1) This device may not cause harmful interference, and (2) this device must accept any interference received, including interference that may cause undesired operation.

Changes or modifications not expressly approved by the party responsible for compliance could void the user's authority to operate this device.

NOTE: This equipment has been tested and found to comply with the limits for a Class B digital device, pursuant to part 15 of the FCC Rules. These limits are designed to provide reasonable protection against harmful interference in a residential installation.

This equipment generates, uses and can radiate radio frequency energy and, if not installed and used in accordance with the instructions, may cause harmful interference to radio communications. However, there is no guarantee that interference will not occur in a particular installation. If this equipment does cause harmful interference to radio or television reception, which can be determined by turning the equipment off and on, the user is encouraged to try to correct the interference by one or more of the following measures:

- Reorient or relocate the receiving antenna.
- Increase the separation between the equipment and receiver.
- Connect the equipment into an outlet on a circuit different from that to which the receiver is connected.
- Consult the dealer or an experienced radio/TV technician for help.

PRODUCT CARE AND MAINTENANCE

This ULTRX™ Hearing Protector is a quality instrument and should be treated as a precision-engineered device.

TO ASSURE PRODUCT PERFORMANCE:

- Do not alter or modify any part of the hearing protector.
- Regularly inspect your hearing protector for any signs of wear and tear.
- Replace worn or damaged parts or Foam Tips immediately.
- Any obstruction between the Foam Tips and the ear (such as spectacles, earrings, hair, etc.) can reduce the effectiveness of the earbuds.
- Improper fit will reduce effectiveness and could result in hearing loss or injury.
- Never allow any liquid to enter the device as this may damage the components within.
- Do not store your device in any location which could expose it to excessive heat including direct sunlight, near car dashboard, heaters, radiators, etc.
- Be careful not to drop your device as this may damage components.
- Never insert any foreign objects into your device. This could result in serious damage to the unit.
- Never permit any solvents to come into contact with your device as this can damage the unit.
- The ULTRX™ Bionic Fuse Bluetooth® Electronic Earbuds are considered IPX5 weatherproof to provide protection against things like sweat and inclement weather use. Do not submerge or immerse in water.

YOUR HEARING PROTECTOR SHOULD BE CLEANED AT REGULAR INTERVALS:

- Clean your earbuds by wiping with a damp cloth which may be treated with mild disinfectant. Do not immerse in water.
- Allow product to fully dry before use or storage.
- Store in dust proof container.

BATTERY INFORMATION

SPECIFICATIONS:

Earbud Battery Model: LIR1254
Earbud Battery Type: 65mAh *2, Rechargeable Lithium Battery
Earbud Voltage: 3.7V

Charging Case Battery Model: Recharging Box
Charging Case Battery Type: 500mAh, Lithium Battery
Charging Case Voltage: 3.7V
Charges in 1.5-2 hours, MAX Runtime approximate 8-9 hours

SAFETY CONCERNS:

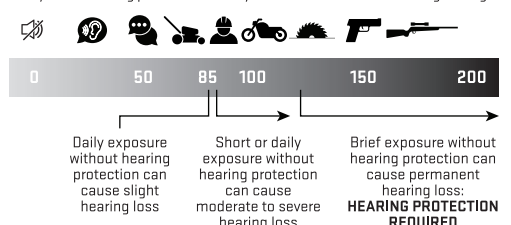
Not dangerous with normal use. Do not remove, open, or shred the battery components within. Ingredients can be harmful, causing injury including irritation and burns. Do not inhale or ingest. Avoid skin or eye contact.

STORAGE:

- If battery is in long term storage (more than 3 months), it is recommended to recharge the battery periodically.
- Long term storage: 14°F to 95°F (-10°C to 35°C)
- Keep out of reach of children.
- Do not expose the battery to heat or fire. Avoid storage in direct sunlight.
- Do not store near or with oxidizing and acidic materials.
- Recycle or dispose of in accordance with government, state, and local regulations.

HEARING PROTECTION SAFETY

Always wear hearing protection in noisy environments to avoid hearing damage.



LEARN MORE [ULTRX.COM](https://www.ultrx.com)

